

Opening report

1.d4 d5 2.c4 c6 3.Nf3 Nf6 4.Nc3



D15, 4.Nc3

124578 Games in 'Mega Database 2022'

1. History

Earliest game:

Staunton,H - Cochrane,J 0-1

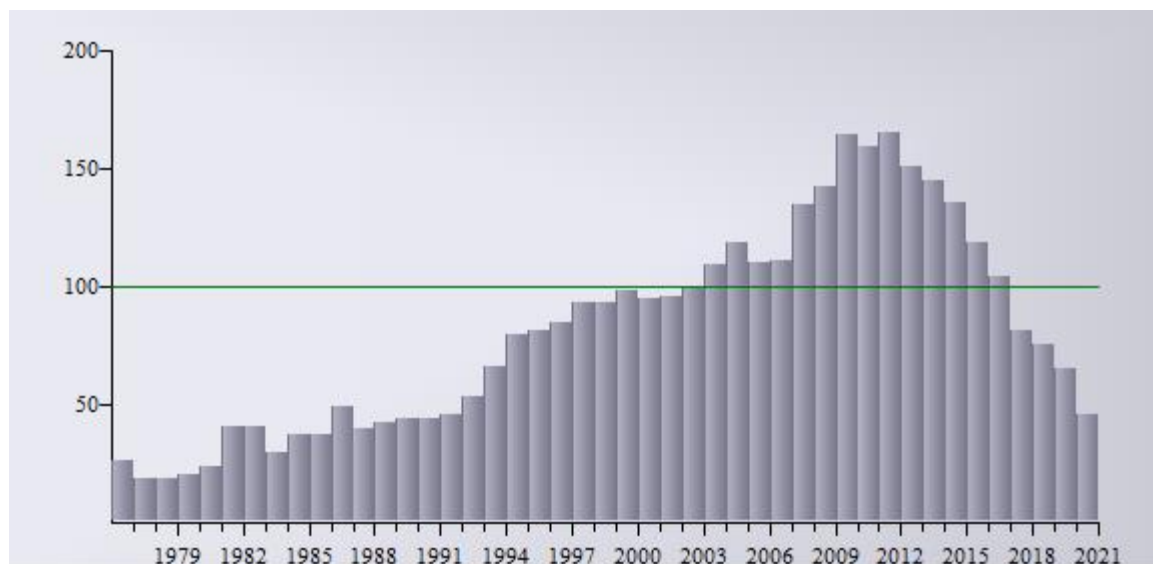
Latest grandmaster game: Akesson,R - Sasikiran,K 0-1

Latest game:

Campbell,C - Vidyarathi,O ½-½



Games played in years (124578)



Fashion index - Distribution of games relative to database [%]

2. Players

a) Strong grandmasters who used this line as White:

<u>Vladimir Kramnik</u>	Result=76.5/117	1990- 2015	Elo-Ø: 2757	<u>Games: 117</u>
<u>Levon Aronian</u>	Result=56.5/91	2002- 2021	Elo-Ø: 2763	<u>Games: 91</u>
<u>Alexander Grischuk</u>	Result=56/90	2004- 2021	Elo-Ø: 2740	<u>Games: 90</u>
<u>Vassily Ivanchuk</u>	Result=51.5/79	1986- 2021	Elo-Ø: 2732	<u>Games: 79</u>
<u>Garry Kasparov</u>	Result=47/58	1979- 2004	Elo-Ø: 2761	<u>Games: 58</u>
<u>Veselin Topalov</u>	Result=40.5/66	1988- 2013	Elo-Ø: 2744	<u>Games: 66</u>
<u>Anatoly Karpov</u>	Result=36/56	1973- 2005	Elo-Ø: 2738	<u>Games: 57</u>
<u>Yangyi Yu</u>	Result=23/31	2011- 2021	Elo-Ø: 2732	<u>Games: 31</u>
<u>Viswanathan Anand</u>	Result=20.5/31	1997- 2016	Elo-Ø: 2789	<u>Games: 31</u>
<u>Wesley So</u>	Result=16.5/24	2009- 2020	Elo-Ø: 2734	<u>Games: 24</u>

b) Other notable players:

<u>Loek Van Wely</u>	Result=126.5/210	1990-2020	Elo-Ø: 2639	<u>Games:</u> <u>210</u>
<u>Vlastimil Babula</u>	Result=119/172	1989-2021	Elo-Ø: 2544	<u>Games:</u> <u>172</u>
<u>Miso Cebalo</u>	Result=114/167	1969-2018	Elo-Ø: 2490	<u>Games:</u> <u>167</u>
<u>Alexander Moiseenko</u>	Result=105.5/163	1995-2021	Elo-Ø: 2645	<u>Games:</u> <u>163</u>
<u>Alexander G Beliavsky</u>	Result=100/162	1971-2018	Elo-Ø: 2639	<u>Games:</u> <u>162</u>
<u>Evgeny Gleizerov</u>	Result=99.5/140	1987-2021	Elo-Ø: 2542	<u>Games:</u> <u>141</u>
<u>Abhijeet Gupta</u>	Result=98.5/145	2000-2021	Elo-Ø: 2580	<u>Games:</u> <u>145</u>
<u>Ivan Farago</u>	Result=95/132	1965-2021	Elo-Ø: 2482	<u>Games:</u> <u>132</u>

3. Statistics

White scores above average (58%).

White performs Elo 2231 against an opposition of Elo 2175 (+56).

Black performs Elo 2155 against an opposition of Elo 2211 (-56).

White wins: 52481 (=42%), Draws: 39447 (=32%), Black wins: 32616 (=26%)

The drawing quote is lower than average. (6% quick draws, < 20 Moves)

White wins are of average length (40).

Black wins are of average length (41).

Draws are shorter than average (36).

4. Moves and Plans

a) 4...e6

Black scores below average (42%).

played by: [Kasparov](#), 2815, 1/3; [Ivanchuk](#), 2724, 2/8; [Anand](#), 2711, 13.5/23; [Kramnik](#), 2703, 30/52; [Gelfand](#), 2684, 5.5/11;

You should play: [5.e3](#) [Click for games](#)



[Karpov,A - Kramnik,V 1-0](#); [Kramnik,V - Ivanchuk,V 1-0](#); [Karpov,A - Kramnik,V 1-0](#); [Bareev,E - Shirov,A 1-0](#); [Karpov,A - Anand,V 1-0](#); [Karpov,A - Anand,V 1-0](#)

Main line:

5...Nbd7 6.Qc2 Bd6 58%, 2336 [Click for games](#)

5...Nbd7 6.Bd3 dxc4 7.Bxc4 b5 54%, 2241 [Click for games](#)

Alternative: 5.Bg5

[Kasparov,G - Ivanchuk,V 1-0](#); [Kramnik,V - Ivanchuk,V 1-0](#); [Ivanchuk,V - Kramnik,V 1-0](#); [Ivanchuk,V - Shirov,A 1-0](#); [Ivanchuk,V - Shirov,A 1-0](#); [Kamsky,G - Kramnik,V 1-0](#)

b) 4...dxc4

Black scores averagely (45%).

played by: [Kramnik](#), 2718, 4/8; [Anand](#), 2713, 5/9; [Ivanchuk](#), 2704, 5.5/8; [Gelfand](#), 2694, 2/5; [Shirov](#), 2693, 0.5/6;

You should play: [5.a4](#) [Click for games](#)



[Kasparov,G - Anand,V 1-0](#); [Kasparov,G - Bareev,E 1-0](#); [Kasparov,G - Shirov,A 1-0](#); [Kramnik,V - Shirov,A 1-0](#); [Kasparov,G - Bareev,E 1-0](#); [Kasparov,G - Timman,J 1-0](#)

Main line:

5...Bf5 6.e3 e6 7.Bxc4 Bb4 8.0-0 54%, 2264 [Click for games](#)

5...Bf5 6.Ne5 Nbd7 7.Nxc4 58%, 2367 [Click for games](#)

c) 4...a6

Black scores averagely (44%).

played by: [Anand](#), 2725, 1/1; [Salov](#), 2710, 0.5/1; [Kamsky](#), 2695, 0/1; [Short](#), 2692, 0.5/2; [Gelfand](#), 2691, 1/3;

You should play: [5.e3](#) [Click for games](#)



[Gelfand,B - Hort,V 1-0](#); [Chernin,A - Gavrikov,V 1-0](#); [Bareev,E - Shirov,A ½-½](#); [Nikolic,P - Illescas Cordoba,M ½-½](#); [Tregubov,P - Burmakin,V 1-0](#); [Neverov,V - Rogozenco,D 1-0](#)

Plans White:

0-0/b2-b3/Bc1-b2/Nf3-e5 (38)

[Click for games](#)

c4xd5/Nf3-e5/Bf1-d3/0-0/f2-f4/Bc1-d2 (13) [Click for games](#)
 0-0/b2-b3/Bc1-b2/b3xc4 (4) [Click for games](#)
 Bf1-e2/0-0 (125) [Click for games](#)
 0-0/Bc1-d2/Ra1-c1 (22) [Click for games](#)
 Bf1-d3/0-0/h2-h3 (18) [Click for games](#)

Plans Black:

b7-b5/Bc8-g4/e7-e6/Nb8-d7 (99) [Click for games](#)
 Bc8-g4/e7-e6/Bg4-h5/Bh5xe2 (18) [Click for games](#)
 b7-b5/Bc8-g4/Bg4xf3/e7-e5 (12) [Click for games](#)
 b7-b5/c6xd5 (106) [Click for games](#)
 Nb8-d7/Bg4-h5/Bh5xe2/Nd7xe5 (12) [Click for games](#)

Alternative: 5.c5

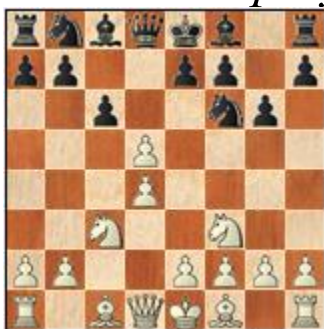
[Georgiev,K - Hodgson,J 1-0](#); [Salov,V - Magem Badals,J 1-0](#);
[Gelfand,B - Shirov,A 1/2-1/2](#); [Gelfand,B - Shirov,A 1/2-1/2](#); [Loginov,V - Volkov,S 1-0](#);
[Sokolov,I - Dreev,A 1/2-1/2](#)

d) 4...g6

Black scores badly (36%).

played by: [Smyslov](#), 2600, 0.5/1; [Hertneck](#), 2575, 0.5/1; [Campora](#), 2531, 2/7; [Frias Pablaza](#), 2520, 0.5/1; [Anand](#), 2515, 0.5/1

You should play: [5.cxd5](#) [Click for games](#)



[Horvath,J - Csom,I 1-0](#); [Teske,H - Altukhov,S 1-0](#); [Vaisser,A - Paniushkin,V 1-0](#); [Georgiev,K - Campora,D 1-0](#); [Bareev,E - Malich,B 1-0](#); [Shirov,A - Csom,I 1-0](#)

Plans White:

Bc1-f4/e2-e3/h2-h3/0-0 (71) [Click for games](#)
 Bc1-f4/0-0/Bf4-g5/Bg5-h4 (8) [Click for games](#)
 0-0/Nf3-e5/Ne5xc6 (22) [Click for games](#)
 0-0/Ra1-c1 (84) [Click for games](#)
 e2-e3/Bf1-d3 (107) [Click for games](#)
 g2-g3/Bf1-g2/0-0 (52) [Click for games](#)

Plans Black:

c6xd5/Nb8-c6/Bf8-g7/0-0/a7-a6 (49) [Click for games](#)
 Nb8-c6/0-0/Nc6-a5/Na5-c6 (3) [Click for games](#)
 Bf8-g7/e7-e6 (50) [Click for games](#)
 Nf6xd5/Nd5xc3/Bf8-g7 (25) [Click for games](#)
 Bf8-g7/b7-b6/Bc8-b7 (21) [Click for games](#)
 c6xd5/Nf6-e4/d5xe4 (17) [Click for games](#)

Alternative: 5.Bf4

[Illescas Cordoba,M - Alawieh,A 1-0](#); [Lobron,E - Pflieger,H 1-0](#);
[Milos,G - Campora,D 1-0](#); [Panno,O - Schweber,S 1-0](#); [Simic,R -](#)
[Ivanovic,B 1-0](#); [Greenfeld,A - Ionescu,C 1-0](#)

e) 4...Bf5

Black scores badly (33%).

played by: [Chabanon](#), 2480, 1/1; [Echeguren](#), 2457, 0/1; [Berelowitsch](#),
 2455, 0.5/1; [Cid](#), 2445, 0.5/1; [Bellon Lopez](#), 2430, 0/1

You should play: [5.cxd5](#) [Click for games](#)



[Kortschnoj, V - Ruderfer, M 1-0](#); [Hjartarson, J - Vigfusson, T 1-0](#);
[Levitt, J - Roeder, F 1-0](#); [Lalic, B - Mufic, G 1-0](#); [Pogorelov, R - Pichler, J 1-0](#);
[Ilicic, Z - Lukic, D 1-0](#)

Plans White:

Qd1-b3/ ..(Nf6xd5)/Qb3xd5/ ..(e7-e6)/Qd5-b3/e2-e3 (18) [Click for games](#)

Qd1-b3/Nc3xd5/ ..(Qb6xb3)/Nd5-c7/Bc1-f4 (21) [Click for games](#)

Qd1-b3/Nc3xd5/ ..(Nf6xd5)/Qb3xd5 (53) [Click for games](#)

Qd1-b3/Bc1-g5/e2-e4/Bf1-b5/Nf3-e5 (9) [Click for games](#)

Qd1-b3/Nc3xd5/e2-e3/Bc1-d2/Bf1-b5/0-0 (5) [Click for games](#)

Qd1-b3/Nc3xd5 (63) [Click for games](#)

Plans Black:

c6xd5/Qd8-b6/Nf6xd5/e7-e6 (46) [Click for games](#)

Qd8-b6/e7-e6/Qb6xb3/Bf5-c2 (21) [Click for games](#)

Nf6xd5/Qd8-b6/Qb6xb3/Ke8-d8 (18) [Click for games](#)

c6xd5/Bf5-c8/e7-e6/Bf8-e7/Nb8-d7/0-0 (6) [Click for games](#)

e7-e6/Nb8-c6 (85) [Click for games](#)

Nf6xd5/Bf5-g6/Nd5xc3/e7-e6 (7) [Click for games](#)

Alternative: 5.Qb3

Miles,A - Bellon Lopez,J 1-0; Paunovic,D - Beil,Z 1-0; Cvetkovic,S - Zurek,M 1-0; Sturua,Z - Kaloussis,E 1-0; Timoshenko,G - Mufic,G 1-0; Cebalo,M - Vencel,R 1-0

f) 4...Qb6

Black scores below average (42%).

played by: Baklan, 2547, 0.5/2; Mokry, 2495, 0/1; Varga, 2480, 0.5/1; Vysochin, 2470, 0.5/4; Kogan, 2460, 0/1

You should play: 5.e3

Chernin,A - Stefanova,A 1-0; Ruban,V - Shabanov,Y 1-0; Krivoshey,S - Vysochin,S 1-0; Shulman,Y - Seeman,T 1-0; Mascarinas,R - Soppe,G 1-0; Dao,T - Piven,I 1-0

Alternative: 5.Qc2

Kaidanov,G - Ruderfer,M 1-0; Van Wely,L - Zaura,V 1-0; Shipov,S - Vysochin,S 1/2-1/2; Inkirov,V - Stefanova,A 1-0; Smejkal,J - Miltner,A 1/2-1/2; Piskov,Y - Shabanov,Y 1/2-1/2

g) 4...Bg4

Black scores badly (30%).

played by: Gamarian, 2420, 0/1; Silseth, 2365, 0/1; Bajovic, 2345, 0.5/1; Barreras, 2335, 0/1; Bjerring, 2330, 0.5/1

You should play: 5.Ne5

Rogers,I - Levi,E 1-0; Tukmakov,V - Jashari,N 1-0; Orpinas Konig,C - Tchimino,J 1-0; Akhsharumova,A - Hund,B 1/2-1/2; Kristensen,K - Bjerring,K 1/2-1/2; Castillo Ruiz,J - Dominguez Sanz,J 1/2-1/2

Alternative: 5.e3

Fluegel,W - Schuler,G 0-1; Dumas,J - Aroutunian,S 1-0; Clement,M -

Jette,S 1-0; Mader,J - Kotlar,A 0-1; Heuberger,J - Schmid,M 0-1;
Perez Huerta,A - Fernandez Aguado,J 1-0

h) 4...Nbd7

Black scores badly (33%).

played by: Ramazan, 2370, 0/1; Petrov, 2355, 0/1; Farago, 2341, 0.5/3;
Roehrl, 2300, 0/1; Summerscale, 2295, 0.5/1

You should play: [5.cxd5](#)

Lukacs,P - Farago,S 1-0; Varga,P - Farago,S 1-0; Grabuzova,T -
Petrov,J 1-0; Kiselev,S - Summerscale,A ½-½; Zoltek,T - Waller,H 1-
0; Del Prado Montoro,C - Pareja Perez,J 1-0

Alternative: 5.e3

Savitskaya,E - Ramazan,E 1-0; Zhu,C - Hoang,T 1-0; Nava Baro,E -
Dominguez Patricio,D 1-0; Moeckel,E - Schneider,A ½-½; Loos,S -
Roehrl,K 1-0; Perez Diaz,M - Rodriguez,O 1-0

i) 4...h6

Black scores badly (31%).

played by: Garcia Ramon, 2315, 1/1; Fernandez Madrid, 2255, 0/1;
Campos, 2255, 1/1; Egyed, 2245, 0/1; Vazquez Cortado, 2205, 0/1

You should play: [5.e3](#)

Ruiz Mata,O - Vazquez Cortado,J 1-0; Gross,R - Abero,R 1-0; Garcia
Paolicchi,R - Vazquez,J 1-0; Diehl,S - Knopp,I 1-0; Belov,I - Gauer,M
0-1; Eyheragaray,P - Campos,J 0-1

Alternative: 5.Bf4

Timar,Z - Solymosi,L 1-0; Eckhardt,W - Sejdic,E 0-1; Weiland,K -
Urbild,O 1-0; Moises,F - Lane,D ½-½; Molvig,H - Damgaard,S 1-0;

Esteban Mendez,J - Bruna,A 1-0j) 4...Ne4

Black scores badly (33%).

played by: Juarez, 2285, 0.5/1; Tomic, 2225, 0/3; Gehlert, 2075, 0.5/1; Alekhine, 2/2; Marshall, 1/1;

You should play: [5.e3](#)

Bronstein,L - Juarez,C ½-½; Keene,R - Tomic,D 1-0; Zander,O - Duehrssen,R 1-0; Atkins,H - Tylor,T 1-0; Rabinovich,I - Romanovsky,P 1-0; Prokes,L - Vecsey,Z 1-0

k) 4...Be6

Black scores miserably (14%).

You should play: [5.Bg5](#)

Brooke,J - Clarke,B 1-0

Alternative: [5.cxd5](#)

Bellaiche,A - Bourdonnais,L 1-0; Lim,T - Nguyen,T ½-½; Hendriks,A - Lahaye,J ½-½

l) 4...b6

Black scores badly (30%).

played by: Cadinot, 1430, 0/1

You should play: [5.e3](#)

Pommier,E - Cadinot,S 1-0; Greifensteiner,P - Ernst,M 0-1

m) 4...Na6

Black scores badly (26%).

You should play: [5.cxd5](#)

[Ross,P - Teodoro,E 1-0; Speijer,A - Englund,F 0-1](#)
